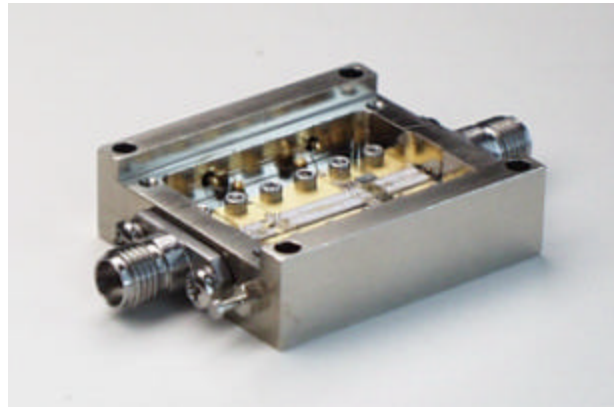


34-38 GHz INTEGRATED FREQUENCY DOUBLER

General Description

The NX00405 frequency doubler is an integrated microwave assembly that includes input buffer amplifier, balanced diode doubler, band-pass filter, output power amplifier and low-pass filter. The doubler is designed to provide high power, pure signal in 34 to 38 GHz frequency range. It operates at 0 to +10 dBm input power over -30 to +70 °C temperature range. The model incorporates voltage regulators and is available with field replaceable SMA/ K connectors.



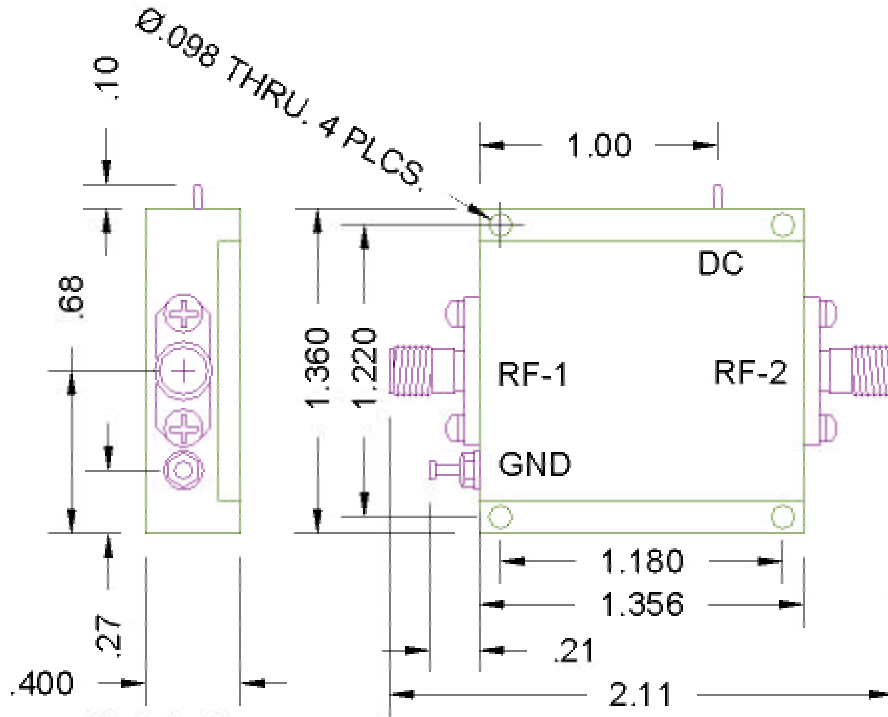
Performance at 25 °C (+2 dBm P_{in})

Parameter	Min.	Typ.	Max.	Units
Input Frequency	17		19	GHz
Output Frequency	34		38	GHz
Output Power	14	16		dBm
Output Power Flatness over Operating Frequency Range		± 1	±1.5	dBm
Fundamental Signal Rejection	20	25		dBc
Input VSWR		1.9:1	2.4:1	dBc
Output VSWR (P_{in} not applied)		2.0:1	2.4:1	
DC Supply Voltage	+11	+12	+15	
Supplied Current at +12 V		450	500	mA

Note: All specifications and data mentioned in this document are preliminary and are subject to change without notice.

34-38 GHZ INTEGRATED FREQUENCY DOUBLER

Outline Drawing



Unit: Inch

Tolerance: .xx±.015 .xxx±0.010 inch

Name	Type	Description
RF-1	SMA-F	RF Signal Input
RF-2	K-F	RF Signal Output
DC		DC Input
GND		Ground